


Exploring Local Authority Perspectives on Drought Impacts in Scottish Private Water Supplies

Sayali Pawar, Paola Ovando, Sarah Halliday, Miriam Glendel
Department of Energy, Environment and Society, University of Dundee, Nethergate, Dundee, DD1 4HN
Email: sayali.pawar@hutton.ac.uk

WHO MANAGES Private Water Supplies?

Local Authorities monitor and carry out risk assessment in PWS serving more than 50 people, or public or commercial premises.

DROUGHT not recognised under PWS regulation



4% Scottish Population depends on PWS
Major gaps exist in knowing **MANAGEMENT** of PWS

Local Authorities identified


CONNECTION TO MAINS
INCREASING STORAGE
as the most powerful mitigation measures

LA have increased awareness of the potential impacts of dry periods on water provision since 2017.

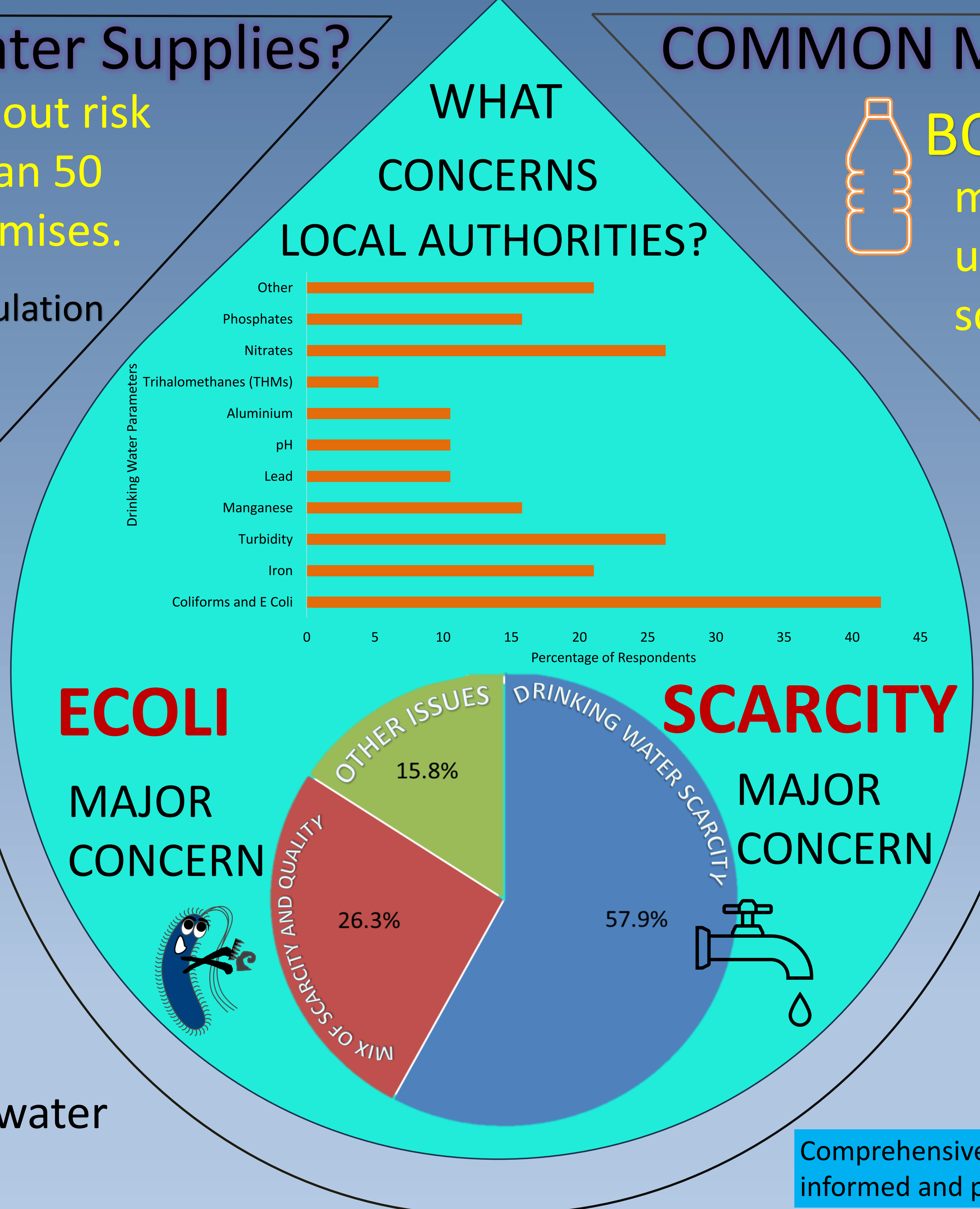
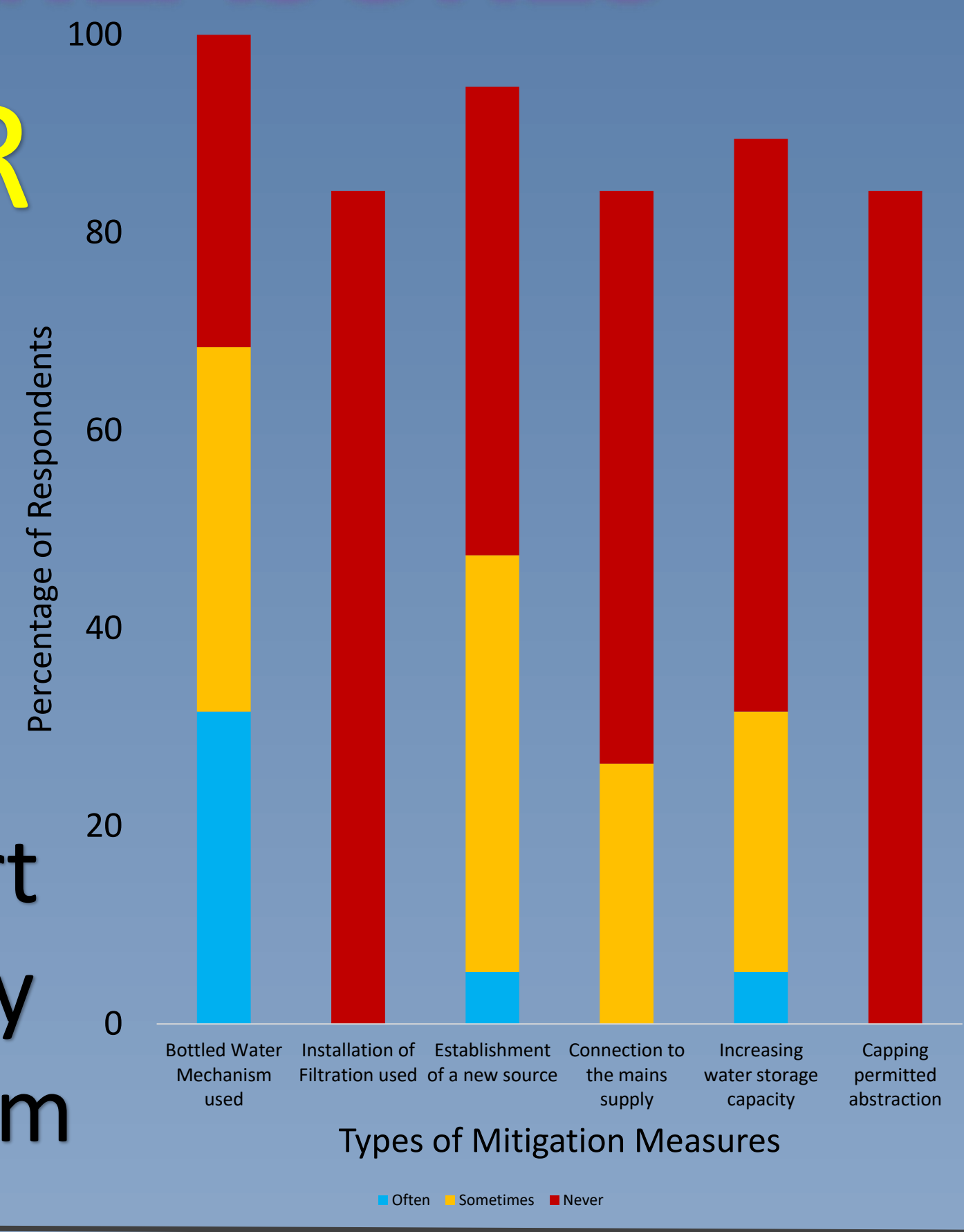
COMMON MITIGATION MEASURES



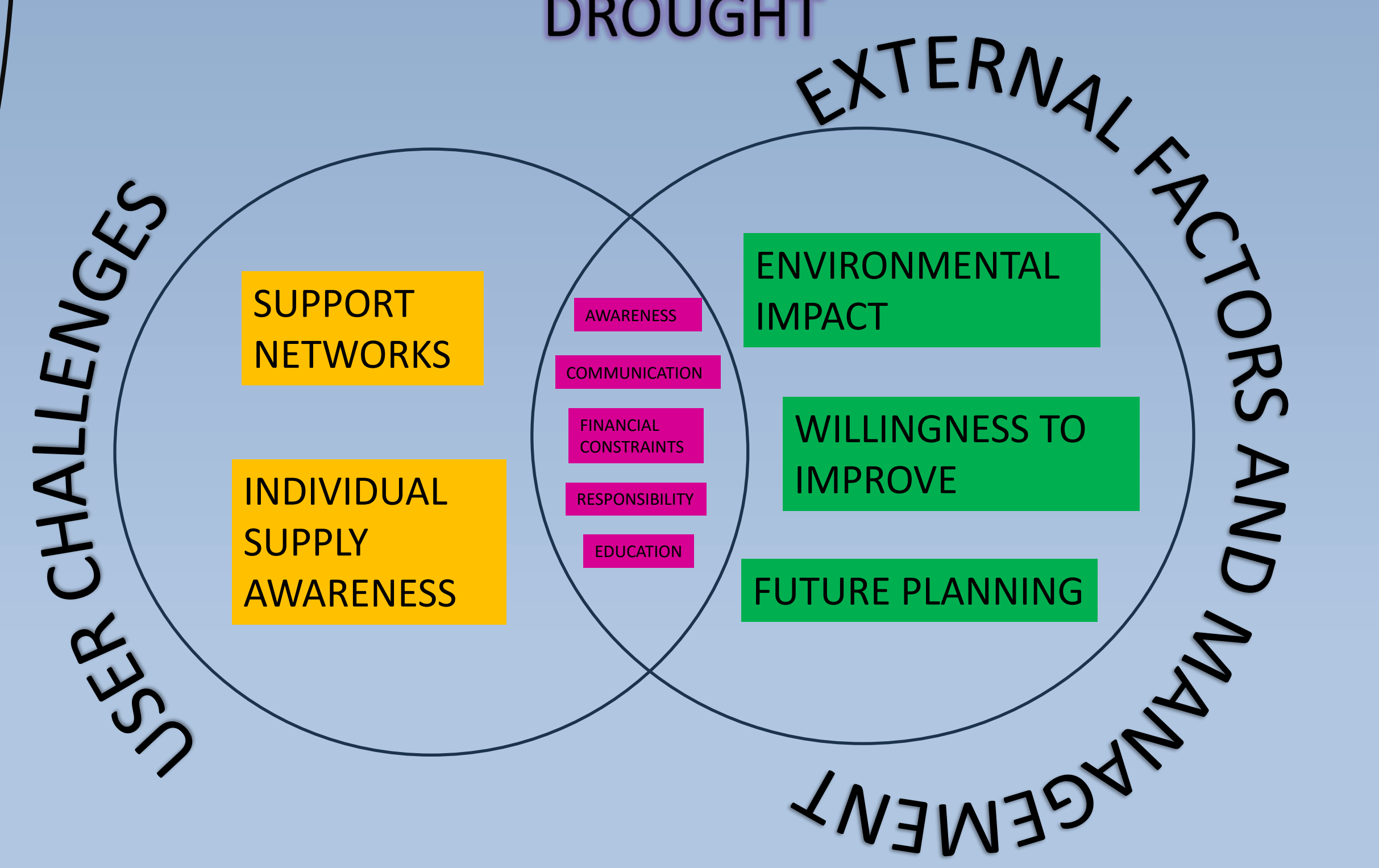
BOTTLE-WATER
most commonly used to mitigate scarcity



SEPA water scarcity report useful as Early Warning System



SOCIAL CHALLENGES AT THE INTERSECTION OF DROUGHT



Comprehensive and adaptive approach to drought management, more informed and proactive stance among local authorities

Acknowledgements: I extend my heartfelt gratitude to all the participating local authorities for their invaluable contribution to the online survey conducted last year. Their insights and cooperation were essential in enriching this study. Additionally, I am deeply grateful to my supervision team for their unwavering guidance and support throughout this research endeavor.